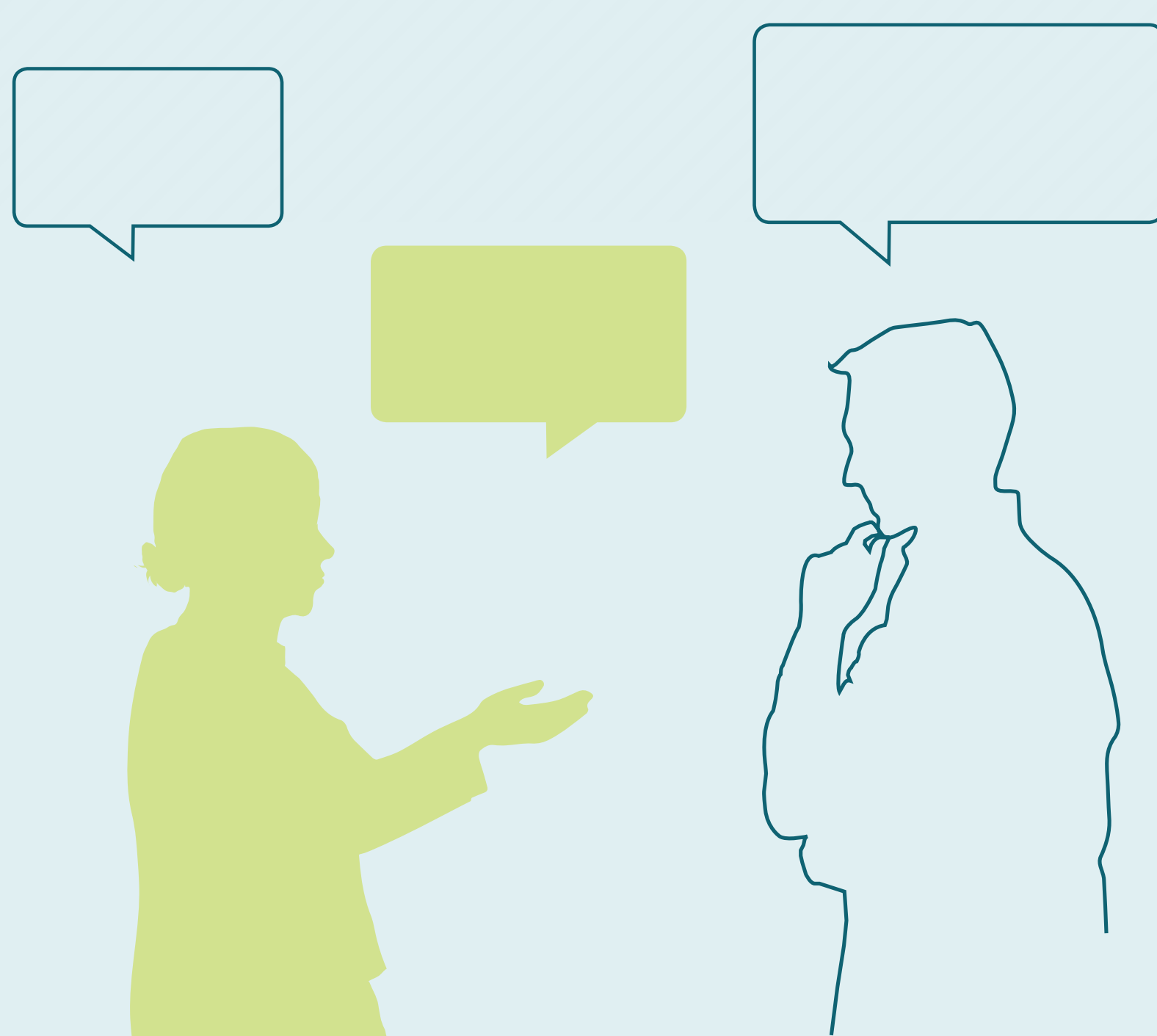


WHAT IS PBA?

PBA (Pseudobulbar Affect) is a medical condition causing sudden, frequent, uncontrollable crying and/or laughing that doesn't match how you feel.



PBA can happen in people living with a brain injury or certain neurologic conditions including, but not limited to:

- **TBI** (*traumatic brain injury*)
- **Alzheimer's disease/dementia**
- **Stroke**
- **MS** (*multiple sclerosis*)
- **ALS** (*amyotrophic lateral sclerosis*)
- **Parkinson's disease**

NUEDEXTA[®]

(dextromethorphan HBr and 20 mg
quinidine sulfate) capsules 10 mg

The first and only FDA-approved treatment for PBA.

PBA is distinct and different from other types of emotional changes caused by neurologic disease or injury.

NUEDEXTA is only available by prescription.

IMPORTANT SAFETY INFORMATION:

Before you take NUEDEXTA, tell your doctor:

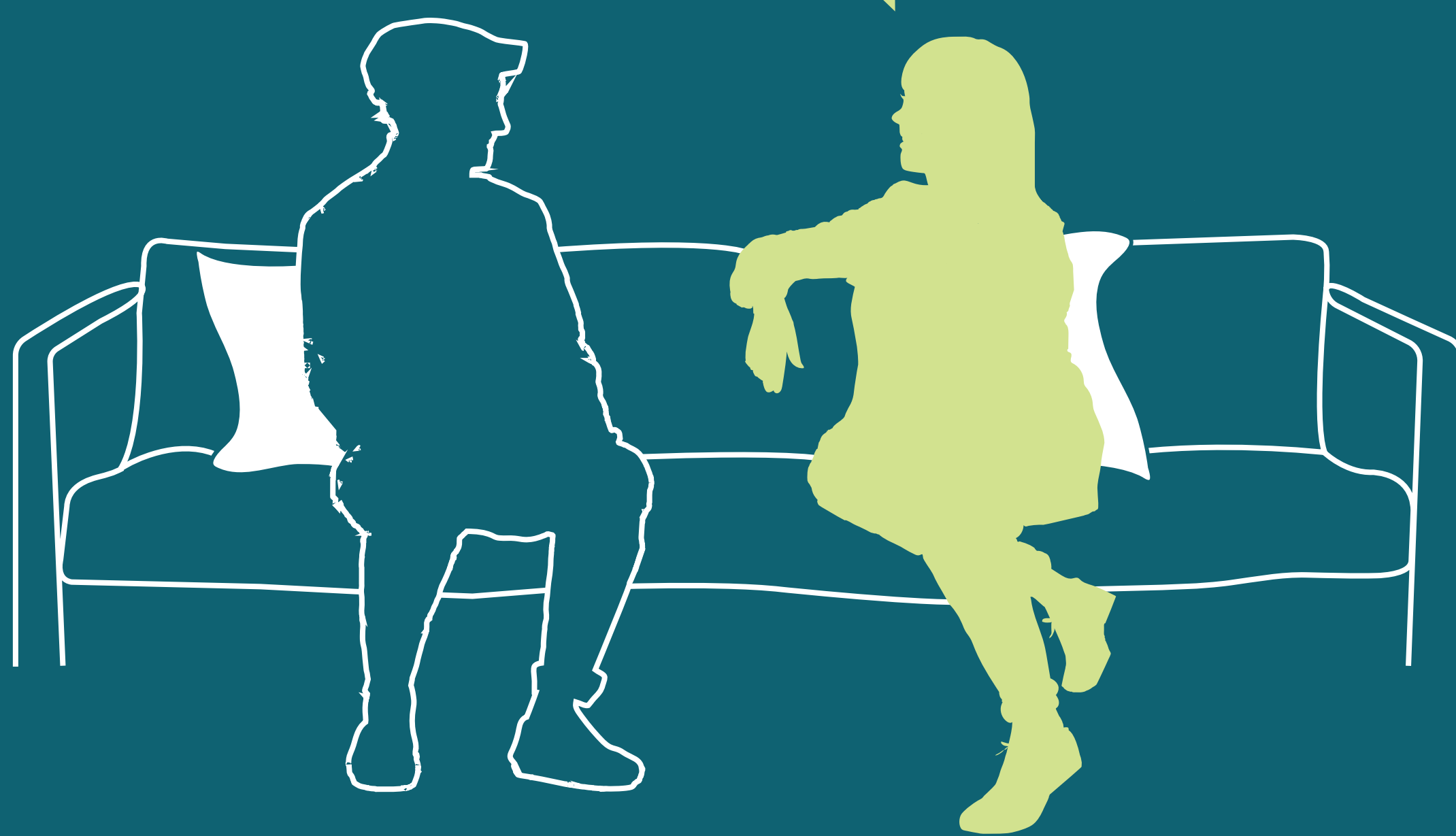
- If you are taking monoamine oxidase inhibitors (MAOIs), quinidine, or quinidine-related drugs. These can interact with NUEDEXTA causing serious side effects. MAOIs cannot be taken within 14 days before or after taking NUEDEXTA.

Please see additional Important Safety Information on the following pages.

WHERE TO BEGIN

“I’m worried that I cry uncontrollably for no reason.”

“I’ve noticed changes where your crying and laughing doesn’t always seem to match how you feel.”



Clear and honest communication may help you move forward together.

NUEDEXTA[®]

(dextromethorphan HBr and 20 mg
quinidine sulfate) capsules 10 mg

IMPORTANT SAFETY INFORMATION (continued):

Before you take NUEDEXTA, tell your doctor:

- If you have previously had an allergic reaction to dextromethorphan, quinidine or quinidine-like drugs.
- About all medicines, herbal supplements, and vitamins you take as NUEDEXTA and certain other medicines can interact causing side effects.

Please see additional Important Safety Information on the following pages.

LET'S TALK SYMPTOMS

HAVE YOU NOTICED ANY OF THESE?

Crying and/or laughing that:

- Started happening after a diagnosis of a certain neurologic condition or brain injury
- Is sudden, frequent, or uncontrollable
- Doesn't match how you feel



Write down your symptoms and share them with your doctor.

NUEDEXTA[®]

(dextromethorphan HBr and 20 mg
quinidine sulfate) capsules 10 mg

IMPORTANT SAFETY INFORMATION (continued):

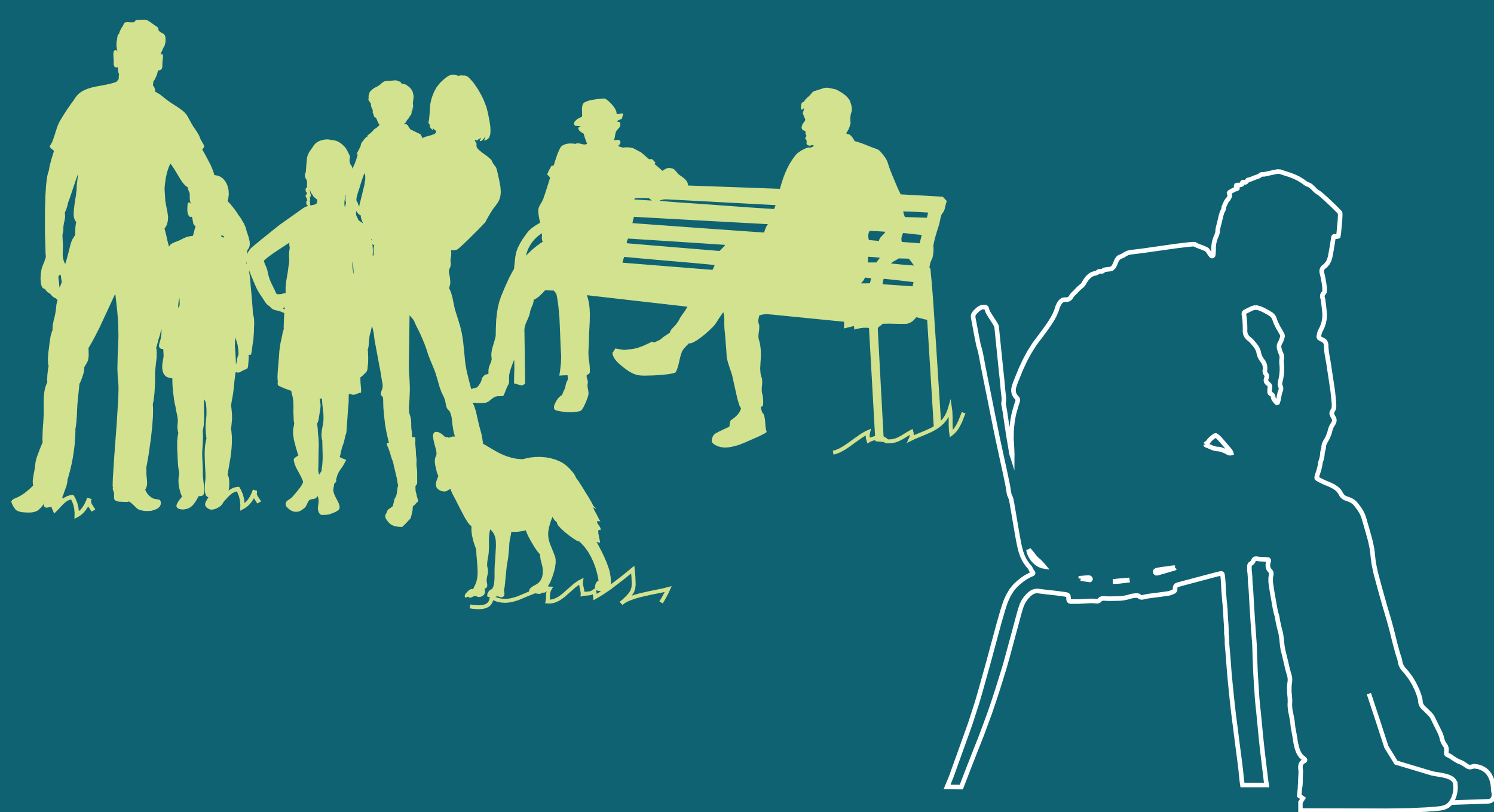
Before you take NUEDEXTA, tell your doctor:

- If you have had heart disease or have a family history of heart rhythm problems. NUEDEXTA may cause serious side effects, including changes in heart rhythm. If you have certain heart problems, NUEDEXTA may not be right for you. Your doctor may test your heart rhythm (heartbeats) before you start NUEDEXTA.
- If you have myasthenia gravis.

Please see additional Important Safety Information on the following pages.

YOUR DAILY ROUTINE

What is the impact of the crying and/or laughing episodes?



Share your concerns about changes in your crying or laughing with your doctor. Discussing the impact of your PBA symptoms may help your doctor determine the best course of action for you.

NUEDEXTA[®]

(dextromethorphan HBr and 20 mg
quinidine sulfate) capsules 10 mg

IMPORTANT SAFETY INFORMATION (continued):

While taking NUEDEXTA, call your doctor right away:

- If you feel faint or lose consciousness.
- If you experience lightheadedness, chills, fever, nausea, or vomiting as these may be signs of an allergic reaction to NUEDEXTA. Hepatitis has been seen in patients taking quinidine, an ingredient in NUEDEXTA.

Please see additional Important Safety Information on the following pages.

MAKE A PLAN

What are your goals for your next doctor's appointment?



Make a plan and be ready to advocate for yourself.

NUEDEXTA[®]

(dextromethorphan HBr and quinidine sulfate) capsules $\frac{20 \text{ mg}}{10 \text{ mg}}$

IMPORTANT SAFETY INFORMATION (continued):

While taking NUEDEXTA, call your doctor right away:

- If you have unexplained bleeding or bruising. Quinidine, an ingredient in NUEDEXTA, can cause a reduction in the number of platelets in your blood which can be severe and, if left untreated, can be fatal.

Please see additional Important Safety Information on the following pages.

STICK TO THE FACTS

- Does your laughing and/or crying not match how you feel?
- How often do your crying and/or laughing episodes occur?



Tell your doctor about your symptoms and the frequency of your PBA episodes.

NUEDEXTA[®]

(dextromethorphan HBr and $\frac{20}{10}$ mg quinidine sulfate) capsules

IMPORTANT SAFETY INFORMATION (continued):

While taking NUEDEXTA, call your doctor right away:

- If you feel dizzy, since it may increase your risk of falling.

Please see additional Important Safety Information on the following pages.

PBA IS NOT DEPRESSION



KEEP IN MIND:

- With depression, outward expressions typically match feelings
- Crying, if present, may be voluntarily controlled
- You could be suffering from depression as well as PBA and both should be managed separately

NUEDEXTA[®]

(dextromethorphan HBr and 20 mg
quinidine sulfate) capsules 10 mg

IMPORTANT SAFETY INFORMATION (continued):

While taking NUEDEXTA, call your doctor right away:

- If you have muscle twitching, confusion, high blood pressure, fever, restlessness, sweating, or shivering, as these may be signs of a potential drug interaction called serotonin syndrome.

Please see additional Important Safety Information on the following pages.

TALKING TO YOUR DOCTOR

- Write down your symptoms and share the list with your doctor
- Bring a caregiver or loved one to your appointment to support you
- Explain how crying and/or laughing episodes may be impacting you

Work with your doctor and explore options for treating your crying and/or laughing episodes.



NUEDEXTA[®]

(dextromethorphan HBr and quinidine sulfate) capsules $\frac{20 \text{ mg}}{10 \text{ mg}}$

IMPORTANT SAFETY INFORMATION (continued):

The most common side effects of NUEDEXTA include:

diarrhea, dizziness, cough, vomiting, weakness, and swelling of feet and ankles. This is not a complete list of side effects. Tell your doctor about any side effect that bothers you or does not go away.

You are encouraged to report side effects of

NUEDEXTA[®] (dextromethorphan HBr and quinidine sulfate).

Please contact Otsuka America Pharmaceutical, Inc. at

1-800-438-9927 or FDA at 1-800-FDA-1088 (www.fda.gov/medwatch).

INDICATION:

NUEDEXTA is approved for the treatment of Pseudobulbar Affect (PBA).

PBA is a medical condition that causes involuntary, sudden, and frequent episodes of crying and/or laughing in people living with certain neurologic conditions or brain injury. PBA episodes are typically exaggerated or don't match how the person feels. PBA is distinct and different from other types of emotional changes caused by neurologic disease or injury.

NUEDEXTA is only available by prescription.

Please read FULL PRESCRIBING INFORMATION at NUEDEXTA.com

Please see additional Important Safety Information on the previous pages.



Otsuka America Pharmaceutical, Inc.